



Leaders in leisure technology

MT650 USB reader installation guide

Prepared by Steve Page

Date 02/10/2013

Contents

<i>Introduction</i>	3
<i>Pre-installation checks</i>	4
<i>Connecting your reader</i>	5
<i>Driver installation</i>	6
<i>Checking new com port configuration</i>	8

Introduction

The MT650 reader is used with Plus2 for reading RFID cards and tags issued to club members or club staff. When a card is presented to a reader Plus2 reads the card serial number sent via com port. This can be a physical com port (typically a 9 pin D type connection) or a virtual com port created by a software driver.

The following instruction explains how to install a MT650 USB reader and check that the driver has created the virtual com ports are successfully ready for us with Plus2.

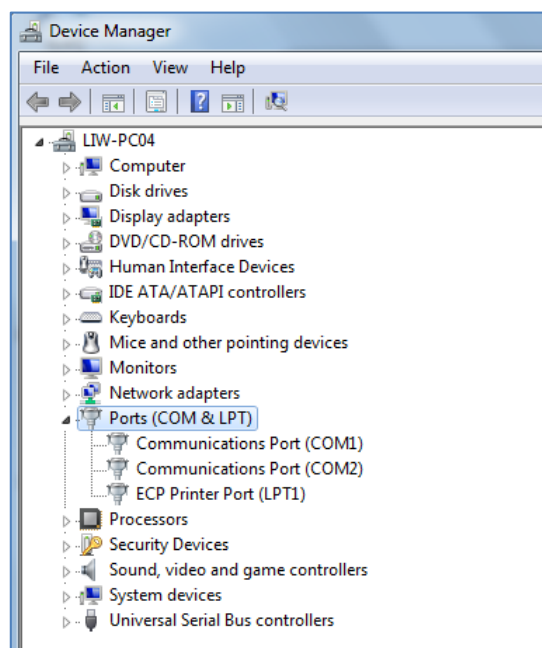
Pre-installation checks

Check your current com port configuration in Device Manager.

To open device manager in Windows 7

- a. Click Windows Start button
- b. Right click **Computer** and select **Properties**
- c. Click **Device Manager**
- d. Expand the **Ports** section

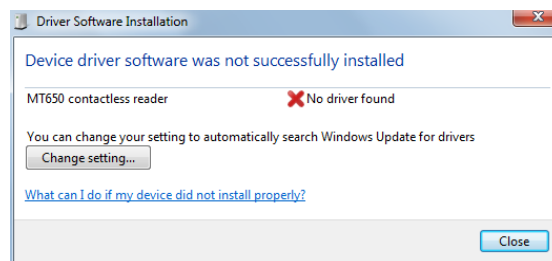
Note down your current configuration



Connecting your reader

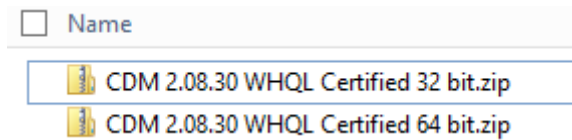
Plug in the MT650 USB reader in to an available USB port. Windows will attempt to install a device driver automatically.

- a. If the driver installation completes automatically then check the com port assignment in Device Manager. (see 'Checking new com port configuration')
- b. If this fails will see the message below. Follow the driver installation steps.

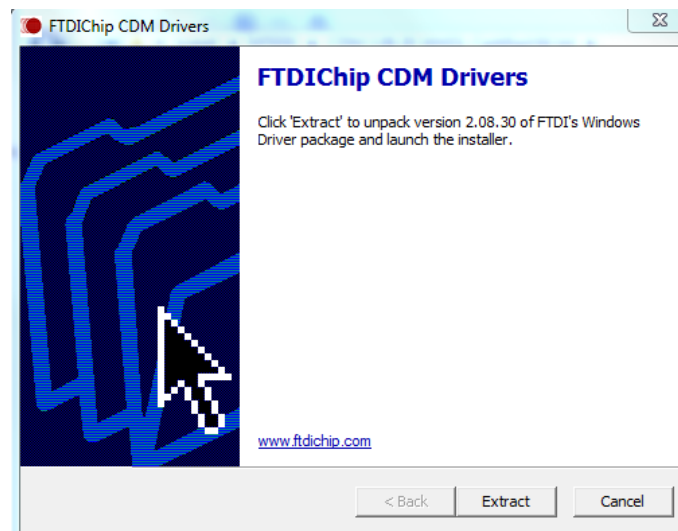


Driver installation

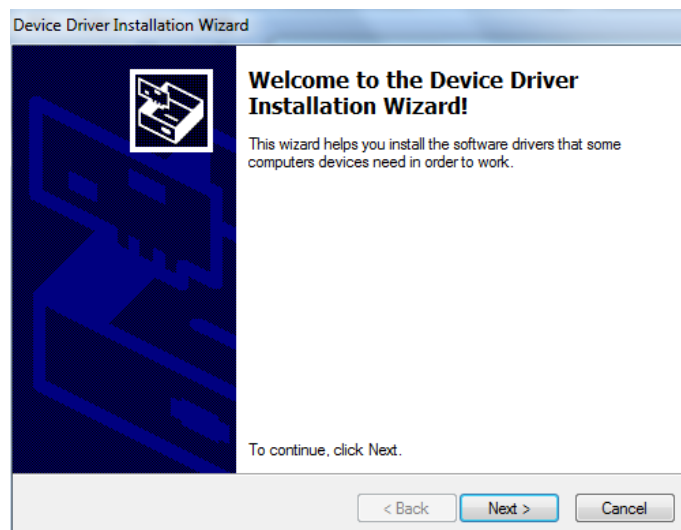
1. Un-zip the required driver (64 bit or 32 bit driver) to a suitable location



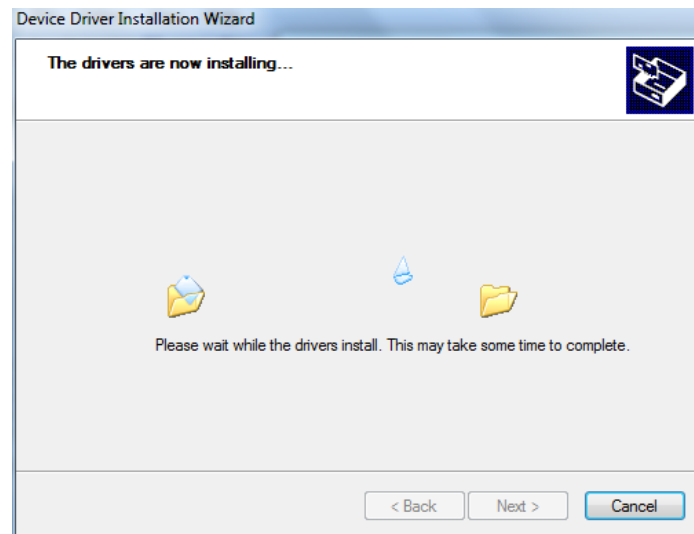
2. Run the file **CDM v2.08.30 WHQL Certified.exe**
3. Click **Extract** when prompted



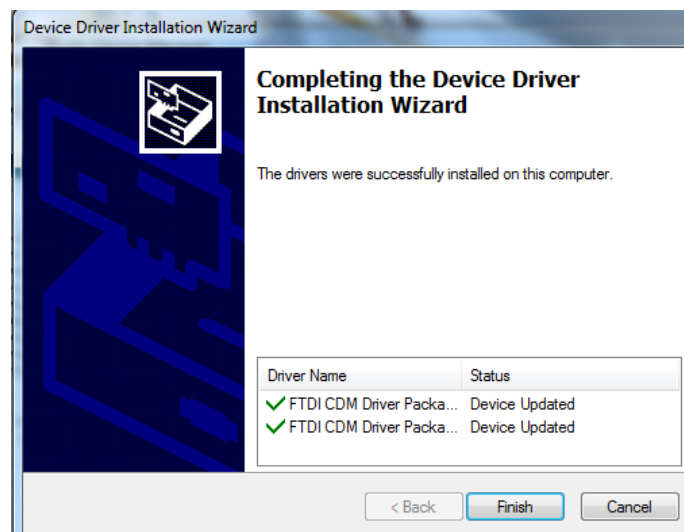
4. At the Welcome screen click **Next**



- Files are then copied and the driver will be installed



- Once complete review the summary screen and click **Finish** to complete



Windows will automatically pick up the new driver and create a virtual com port

Checking new com port configuration

To open device manager in Windows 7

- a. Click Windows Start button
- b. Right click **Computer** and select **Properties**
- c. Click **Device Manager**
- d. Expand the **Ports** section

The newly created com port will appear as a **USB Serial Port (COM#)** where # is the com port number assigned to the driver.

